

Lines Cards

Oct'09




BIGSHINE KOREA
korea@bigshine.co.kr
8231-711-8881

2F WMC Bldg, 5-1 Sunae-Dong,
Bundang-Gu, Sungnam-Si
Tel. 8231-711-8881 (Rep)
Fax. 8231-711-8174
Web: www.bigshine.co.kr

New York : 201-836-8600
Hong Kong : 852-2571-5240
Singapore : 65-6472-1981
Taiwan : 886-2-2925-3251

BIGSHINE KOREA Co., Ltd.



Mainstream of Digital Solution

Representative - I



**Eon Silicon
Solution Inc.**
(www.eonssi.com)

- Parallel NOR Flash
- 512K~256Mb
- Serial NOR Flash
- 512K~128Mb
- Multi-Bank Flash
- 32Mb~128Mb
- MCP Flash
- 3216 / 25664



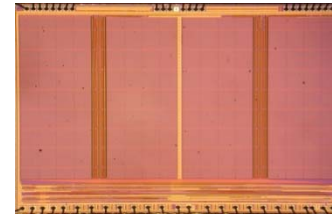
Chiplus
(www.chiplus.com)

- SDRAM
- 16Mb/64Mb/128Mb
- Super Low Power SRAM
- 64Kb/256Kb/1Mb/2Mb
- 4Mb/8Mb
- LED Driver Ics
- Memory IP



Logic Devices
(www.logicdevices.com)

- IMOD
- 1Gb/2.5Gb/4Gb/5Gb
- HD Frame Memory
- 15Mb/30Mb/60Mb
- Digital Video Filters
- Arithmetic Functions



- **NOR Flash / EEPROM**
- **SDRAM / SRAM**
- **LED Driver IC**
- **Wafer Business**
- **HD Frame Memory**



ISSI
(www.issi.com)

- SDRAM
- 16Mb/64Mb/128Mb/256Mb
- DDR / DDR2
- Super Low Power SRAM
- EEPROM
- Wafer Business



Representative - II



WIZnet
(www.wiznet.co.kr)

- Fully Hardwired TCP/IP Chip
- W5300/W5100/W3150A+
- Network & Gateway Module
- 830MJ/811MJ/812MJ/7010B+
- 100SR/110SR/120SR
- Wireless & Webserver Module
- WIZ610wi / WIZ200web
- Evaluation Board



- **Hardwired TCP/IP Chip**
- **Wireless Module**
- **LAN Connectors, POE**
- **POL/VRM/Boost Converter**
- **Diplexer / Triplexer**



bel

COMPONENTS FOR A
CONNECTED
PLANET™

Belfuse
(www.belfuse.com)

- MagJack / Transformer
- POE/Gigabit/10/100Base
- Power Products
- POL / VRM / Boost / Bus
- Circuit Protection
- Fuses / PTC / 600V Tele.
- Broadband Products
- Diplexer / Triplexer



Representative - III



PLX

(www.plxtech.com)

- PCI Express Products
 - PCIe Switch / Bridge
- Oxford Storage Solution
 - DAS(USB, 1394, Esata, RAID)
 - NAS(Gigabit Ethernet)
- USB Controller
 - Host/Devices/OTG
- Others Connectivity
 - PCI(e) to Multiport UART



- **PCI Express Solution**
- **NAS / DAS (OXFORD)**
- **USB Controller**
- **Serial Bridges**
- **SSD Controller, BGA SSD**



Silicon Motion

(www.siliconmotion.com)

- Mobile Storage
 - SSD Controller (SATA/PATA)
 - BGA SSD (SATA /PATA)
(Density : 2GB~16GB)
- Multimedia SOCs
 - Chipset for PMP, MP4
 - PC Camera Controller
 - Industrial Graphic Controller



INDILINX

(www.indilinx.com)

- SSD Solution
- Barefoot Controller
 - High-end Solution
 - Over 200MB/s sequential R/W
 - Supporting MLC/SLC
 - 512GB Capacity
- Amigo Controller
 - Low-end Solution
 - 32GB~256GB Capacity



Representative - IV



AMS

(advanced-monolithic.com)

- Voltage Regulators
- Voltage References
- Voltage Detectors
- DC-DC Converters
- Power Distribution



AiT

(www.ait-ic.com)

- Audio Amplifier
- Battery Management
- DC-DC Converters /LDO
- Switch / USB Power S/W
- LED Driver / LED Backlight
- EEPROM



VinChip Systems

VinChip

(www.vinchip.com)

- 32bit RISC CPU Core
- USB IP Core
 - USB3.0 Devices / Hub
 - USB2.0/1.1 Solutions
- Design Services

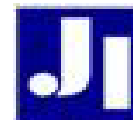
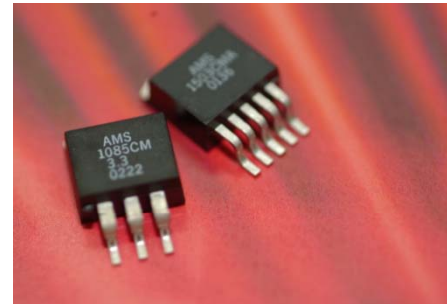


Arasan

(www.arasan.com)

- IP Core Solutions
 - SD/SDIO IP
 - MMC & CE-ATA Solution
 - PCI Express Solution
 - CF, NAND Flash Solution

- **P**ower Solutions
- **A**udio Amplifier
- **E**EPROM
- **U**SB IP Core
- **E**Embedded Design Service



Jasmin Infotech

(jasmin-infotech.com)

- Embedded Solutions
- DRM / DMB / DAB
- Professional Audio Sol.
- Automotive Infotainment



Thank you very much!

BIGSHINE KOREA Co., Ltd.